



MLC 340/360 CO₂ laser marking machine

Adopting a brand new intelligent vector control algorithm, the marking speed is greatly improved, and the integrated compact structure allows for easy permanent and high contrast marking on both conveyor lines and bag packaging machines, ensuring product traceability. It is the preferred product for anti-counterfeiting and anti smuggling systems.

Easy to operate within reach

Simple integrated design ensures smooth integration into your production line, intuitive user interface and built-in wizard, which can significantly reduce operator training and make you master it quickly.

High quality products economically reliable

No consumables required, permanent identification, economically reliable identification application. Obtain excellent products at reasonable prices to make laser technology universal.

Precise design and flexible use

German technology and excellent component design ensure a reliable and high-quality system that can handle various application scenarios.

Excellent technology endless possibilities

Intelligent management of your labeling work process from the workshop to the automat production line, allows you to easily complete multiple tasks, repeat checks historical files and other external data import or scan to obtain data sources.

Shanghai Rottweil Handyware Printing Technology Co., Ltd

Address: T15-1-2, No. 999 Ningqiao Rd., Shanghai 201206, P.R., China

Email: info@rottweilglobal.com

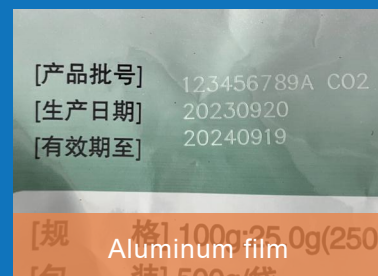
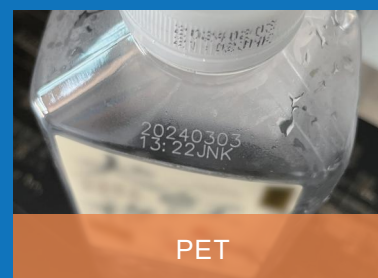
Tel: +86-21-58348225

Web: <http://www.rottweilglobal.com>

Main technical parameters:

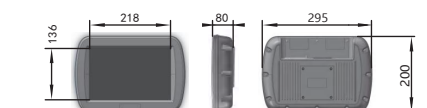
| project | Parameter table | 40w | 60w |
|----------------------|-----------------------|--|------|
| characteristic | Machine material | All aluminum sandblasting oxidation | |
| | Laser | Sealed metal RF CO2 laser generator | |
| | Laser wavelength | 10.6um is standard and 10.2 or 9.3um is optional | |
| | Output power | ≥43W | ≥78W |
| | Marking speed | ≤12000mm/s | |
| | Controller | 10.2 inch touch controller | |
| | Cooling system | Air cooling | |
| parameter | Focus lens | 145mm | |
| | Minimum line width | 0.03mm | |
| | Repetition accuracy | 0.01mm | |
| | Marking range | 110mm×110mm(optional) | |
| | Positioning mode | Red light focusing | |
| | Number of rows | Any line within the marking range | |
| | Production line speed | 0~130m/min (depending on the material) | |
| Software | Multilingual | English, Spanish, German, Chinese, Russian, Arabic, etc | |
| | Management authority | Multi user management authority | |
| | Operating system | Linux system | |
| | Marking mode | Static, analog, encoder | |
| | Reserved signal | Start, print status, finish, fault | |
| | Data protection | With power failure data protection energy | |
| | Monitor | Provide over speed alarm function | |
| | Decross | Automatic removal of intersections | |
| | Coding software | Single and double machine code sending | |
| Support type | Fonts | Chinese and English, numbers, traditional, etc | |
| | File format | BMP/DXF/HPGL/JPEG/PLT | |
| | Barcode | CODE39、CODE128、CODE126、QR | |
| Servicing parameters | Power Supply | 220V/50HZ | |
| | Power consumption | 800W | |
| | Net weight of machine | Laser part: 40W/14kg; 60W/23kg; Flight support part: 22kg | |
| | Overall dimension | 40W head: 665X160X181mm; 60W head: 850X180X181mm | |
| environment | Requirement | External temperature: 0°C~45°C; humidity≤95%; Non-condensing; vibration-free | |

sample:

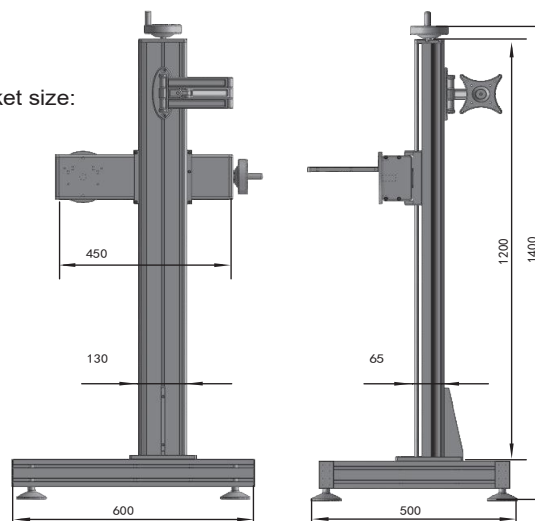


External dimensions:

Controller size:



Bracket size:



40W Laser head size:

